



**WISUALARM**



SMARTER AND SAFER LIFE EXPERT

CONTENTS

# CONTENTS

<b>01</b>	About Wisualarm	01
<b>02</b>	Performance Research and Test	03
<b>03</b>	Intelligent Manufacturing	05
<b>04</b>	Product Portfolio	07



## ABOUT US

Wisualarm is an advanced global manufacturer of fire safety products with features ready for home and professional businesses, to protect people and property from fire and related hazards.

Wisualarm builds and grows upon the expertise of Dahua Technology, since its establishment in 2015, more than 60% of its employees engaged directly in the R&D, Wisualarm has been working hard to practice the concept of the combination of video and fire detection. Utilizing the cutting-edge split-spectrum smoke sensing technology and smart IoT & vision technology, Wisualarm is committed to making the world a safer and smarter place to live.

# Performance Research and Test

Wisualarm and Dahua Technology are equipped with an advanced ORT experiment center, utilizing the industry leading reliability testing capabilities to guarantee stable and reliable product quality, such like weathering test, mechanical test, salt spray test, waterproof test, failure analysis, life test and RoHS. As a Zhejiang Key Laboratory, it consists of more than 30 laboratories – including EMC anechoic chamber, Highly Accelerated Life Testing (HALT) laboratory and device analysis laboratory – that focus on various fundamental researches and testing of materials, components, single boards and the entire machine itself. Its reliability test has also obtained a capability accreditation from the China National Accreditation Service (CNAS).

We drive more than 30 computer software copyright registration certificate & design patent and more than 70 utility model & invention patent and earn national MIIT intelligent manufacturing pilot demonstration project, national quality model. Also, Wisualarm has the capability to do the fire and smoke simulation, and complete the accurate testing of smoke and heat fire detectors in the professional and cutting-edge test tunnels from Lorenz and AW technology.

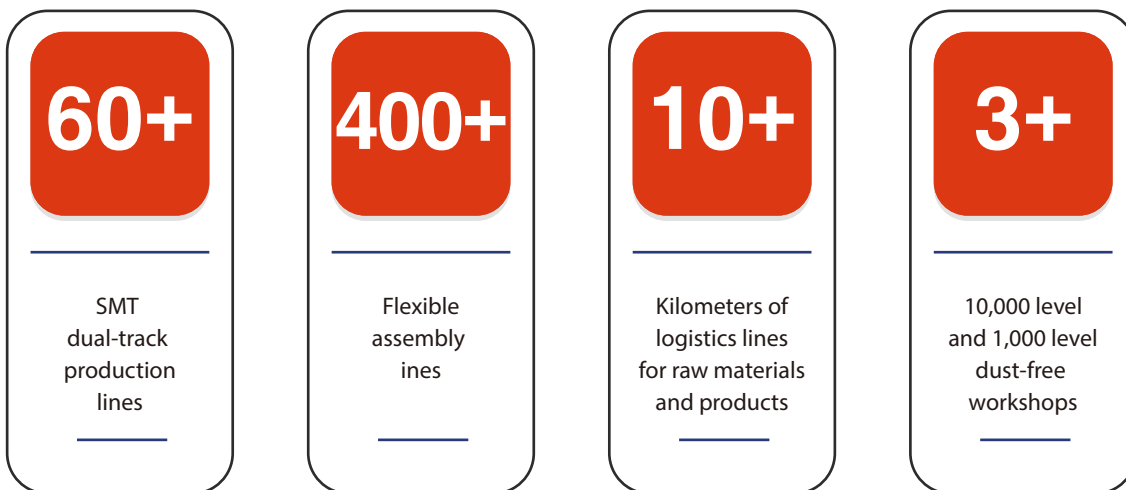


- ① EMC Testing Capability
- ② Reliability Testing Capability
- ③ Safety Inspection Capability
- ④ Radio Frequency Research Capability
- ⑤ Fire and Smoke Simulation Capability
- ⑥ Antenna Research Capability
- ⑦ AW Technology Detector Test Tunnel
- ⑧ Lorenz EN-54 Smoke Test Tunnel

# Intelligent Manufacturing

As the subsidiary company of Dahua Technology, the products of Wisualarm are all produced in the Dahua AIoT Industrial Park, which covers an area of 1000 acres, divided into the 800,000m<sup>2</sup> manufacturing center, 190,000m<sup>2</sup> distribution center, and 330,000m<sup>2</sup> living center. Dahua adopts the industry's advanced intelligent equipment and digital management system, using innovative automation and flexible production mode to create a flexible intelligent production line. With the deep integration of advanced producing software such as SCP, APS, MES, and PDM, all the products are produced under digital, visualized, traceable product control.

More than 60 cutting-edge SMT dual-track production lines, and 400 flexible assembly lines, which can improve the overall production Efficiency and product quality.





### **9000m<sup>2</sup> Mold factory**

Integrating mold development and manufacturing to provide high-precision products and services



### **38000m<sup>2</sup> Stock Preparation Warehouse**

Achieving accurate material distribution and efficient management by using intelligent warehousing systems



### **36000m<sup>2</sup> PCBA factory**

Accommodating the production of samples, small batches products and high-end products by equipped with more than 50 advanced SMT production lines



### **130000m<sup>2</sup> Full-process Automated Factory**

Realizing flexible production of assembly, testing and packaging by featuring the independently developed automated production lines and the combination of machine vision cameras



### **250000m<sup>2</sup> Warehousing and Logistics Area**

Process utilize an end-to-end integrated system management to greatly shorten the delivery time of finished products and improve customer satisfaction



# STANDALONE PRODUCT SERIES

Standalone product series provide an all-round fire safety and health solution at home, including the detection of smoke, carbon monoxide (CO), natural gas, liquefied petroleum gas (LPG), abnormal heat and carbon dioxide (CO<sub>2</sub>). With effortless setup and operation, the products can be easily installed and protect your families once unboxing.



Comprehensive Protection for Residential Fire Safety and Health



Accurate Detection Based on Split-spectrum Technology and Electrochemical CO Sensor



Sensitive Alarm and Effective Notification



Including Long Battery Life and Easy-to-Use Plug-in Adaptor



10-year Replaceable Battery  
Smoke Alarm

**DHI-HY-SA20A**

Power Source  
**Replaceable 3V CR123A  
lithium battery**

Battery Life  
**10 years**

Sensor Type  
**Split-spectrum photoelectric sensor**

Safety Standard  
**EN 14604:2005+AC:2008, AS 3786:2014**

Certification  
**TÜV, BSI, BOSEC, UKCA and CE listed**

Alarm Sound Level  
**≥85 dB at 3 m (10 ft)**

Silence Duration  
**12 minutes**

Silence by IR Remotes  
**Support**



10-year Sealed Battery  
Smoke Alarm

**DHI-HY-SA30A**

Power Source  
**Sealed 3V CR123A  
lithium battery**

Battery Life  
**10 years**

Sensor Type  
**Split-spectrum photoelectric sensor**

Safety Standard  
**EN 14604:2005+AC:2008, AS 3786:2014**

Certification  
**TÜV, BSI, KRIWAN, Q-label, UKCA and CE listed**

Alarm Sound Level  
**≥85 dB at 3 m (10 ft)**

Silence Duration  
**12 minutes**

Silence by IR Remotes  
**Support**





**DHI-HY-SA40A**

**DHI-HY-SA40D / DHI-HY-SA40E**

Power Source  
**Sealed 3V CR123A  
lithium battery**

Power Source  
**Sealed 3V CR123A  
lithium battery**

Battery Life  
**10 years**

Battery Life  
**10 years**

Sensor Type  
**Split-spectrum photoelectric sensor**

Sensor Type  
**Split-spectrum photoelectric sensor**

Safety Standard  
**EN 14604:2005+AC:2008, AS 3786:2014**

Safety Standard  
**EN 14604:2005+AC:2008, AS 3786:2014**

Certification  
**TÜV, UKCA and CE listed**

Certification  
**TÜV, UKCA and CE listed**

Alarm Sound Level  
**≥85 dB at 3 m (10 ft)**

Alarm Sound Level  
**≥85 dB at 3 m (10 ft)**

Silence Duration  
**9 minutes**

Silence Duration  
**9 minutes**

Silence by IR Remotes  
**Support**

Silence by IR Remotes  
**Support**



10-year Replaceable Battery  
Carbon Monoxide Alarm

**DHI-HY-GC20C**

Power Source

**Replaceable 3V CR123A  
lithium battery**

Battery Life

**10 years**

Sensor Type

**Electrochemical sensor**

Safety Standard

**EN 50291-1:2018, EN 50291-2:2019**

Certification

**TÜV, UKCA and CE listed**

Alarm Sound Level

**≥85 dB at 3 m (10 ft)**

Silence Duration

**45 seconds**

Indicator Light

**LED (red/yellow/green)**



10-year Sealed Battery  
Carbon Monoxide Alarm

**DHI-HY-GC20D**

Power Source

**Sealed 3V CR123A  
lithium battery**

Battery Life

**10 years**

Sensor Type

**Electrochemical sensor**

Safety Standard

**EN 50291-1:2018, EN 50291-2:2019**

Certification

**TÜV, UKCA and CE listed**

Alarm Sound Level

**≥85 dB at 3 m (10 ft)**

Silence Duration

**45 seconds**

Indicator Light

**LED (red/yellow/green)**



10-year Sealed Battery  
Carbon Monoxide Alarm



10-year Sealed Battery  
Heat Alarm

**DHI-HY-GC30A**

**DHI-HY-HT10A**

Power Source  
**Sealed 3V CR17450A  
lithium battery**

Power Source  
**Sealed 3V CR123A  
lithium battery**

Battery Life  
**10 years**

Battery Life  
**10 years**

Sensor Type  
**Electrochemical sensor**

Sensor Type  
**Thermistor**

Safety Standard  
**EN 50291-1:2018, EN 50291-2:2019**

Safety Standard  
**BS 5446-2:2003**

Certification  
**TÜV, UKCA and CE listed**

Certification  
**SGS and CE listed**

Alarm Sound Level  
**≥85 dB at 3 m (10 ft)**

Alarm Sound Level  
**≥85 dB at 3 m (10 ft)**

Silence Duration  
**9 minutes**

Detection Class  
**Class A1 fire detection (54°C - 65°C)**

Environmental Detection  
**Temperature and Humidity Detection**

Silence Function  
**Support**



Natural Gas Alarm

**DHI-HY-GA40A**

Power Source  
**DC 12V adaptor**

Gas Type  
**Natural gas (methane)**

Sensor Type  
**Catalytic-type sensor**

Alarm Threshold  
**10% LEL**

Certification  
**CE listed**

Alarm Sound Level  
**≥70 dB at 1 m (3.3 ft)**

Warm-up Period  
**180 seconds**

Indicator Light  
**LED (red/yellow/green)**



LPG Alarm

**DHI-HY-GB40A**

Power Source  
**DC 12V adaptor**

Gas Type  
**LPG (Propane)**

Sensor Type  
**Catalytic-type sensor**

Alarm Threshold  
**10% LEL**

Certification  
**CE listed**

Alarm Sound Level  
**≥70 dB at 1 m (3.3 ft)**

Warm-up Period  
**180 seconds**

Indicator Light  
**LED (red/yellow/green)**



Natural Gas Alarm

**DHI-HY-GA20A**

Power Source  
**DC 12V adaptor**

Gas Type  
**Natural gas (methane)**

Sensor Type  
**Semiconductor sensor**

Alarm Threshold  
**8% LEL**

Certification  
**CE listed**

Alarm Sound Level  
**≥70 dB at 1 m (3.3 ft)**

Warm-up Period  
**180 seconds**

Indicator Light  
**LED (power/alarm/fault/EOL)**



Air Quality Monitor  
 (Carbon Dioxide)

**DHI-HY-M1**

Power Source  
**Built-in 2500 mAh rechargeable lithium-ion battery**

Sensor Type  
**NIDR + Photoacoustic**

CO<sub>2</sub> Measurement Range  
**400 ppm-5000 ppm**

Temperature Measurement Range  
**0°C to +60°C (32°F to +140°F)**

Humidity Measurement Range  
**0 -99% RH**

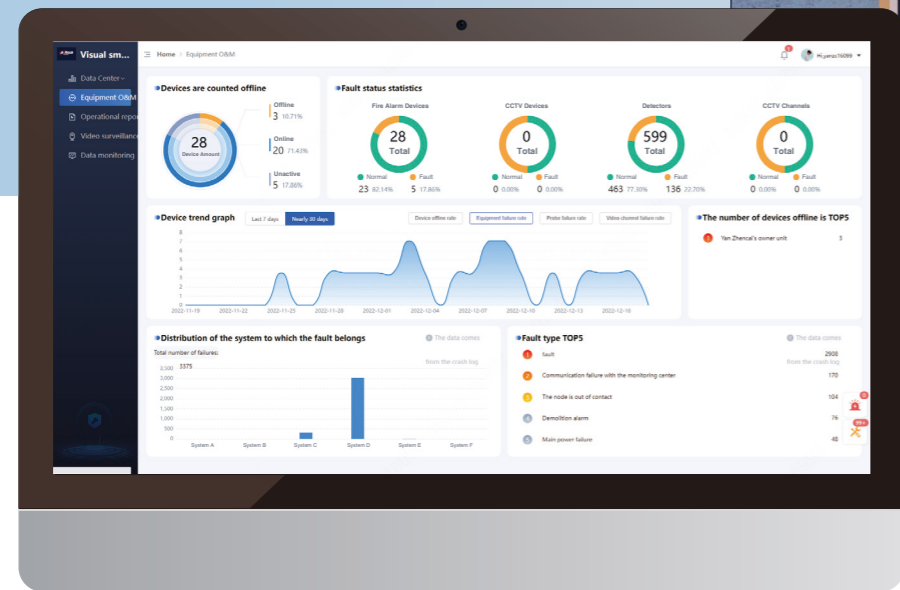
Temperature Accuracy  
**± 0.5°C (± 32.9°F)**

Humidity Accuracy  
**± 5% RH**

Display  
**4.23 inch E-ink screen**

# WISULINK PRODUCT SERIES

The Wisulink product series consists of a wireless interconnected network of smoke alarms, heat alarms, carbon monoxide alarms and the wireless gateway that connects them all. A website portal and application on the cell phone are also the crucial components in order to provide the data visualization, fault indication and alarm notification for landlords and end users respectively.



Wireless Home Safety Network Based on 868MHz Radio Frequency



Interconnected up to 24 pcs Wireless Alarm Units



Long Transmission Distance and Wall-crossing Ability to Cover All the Rooms



Remote Data Management and Visualization

WisunLink



Wireless Interconnected Smoke Alarm

**DHI-HY-SA30A-R8**

Power Source

**Sealed 3V CR123A lithium battery**

Battery Life

**10 years**

Sensor Type

**Split-spectrum photoelectric sensor**

Safety Standard

**EN 14604:2005+AC:2008, AS 3786:2014**

Certification

**TÜV, BSI, Q-label, UKCA and CE listed**

Operating Frequency

**868 MHz**

Maximum Number of Interconnection

**24 pcs**

Alarm Sound Level

**≥85 dB at 3 m (10 ft)**

Silence Duration

**12 minutes**

WisunLink



Wireless Interconnected Smoke Alarm

**DHI-HY-SA40A-R8**

Power Source

**Sealed 3V CR123A lithium battery**

Battery Life

**10 years**

Sensor Type

**Split-spectrum photoelectric sensor**

Safety Standard

**EN 14604:2005+AC:2008, AS 3786:2014**

Certification

**TÜV, UKCA and CE listed**

Operating Frequency

**868 MHz**

Maximum Number of Interconnection

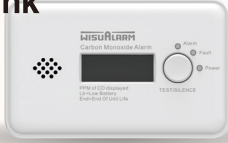
**24 pcs**

Alarm Sound Level

**≥85 dB at 3 m (10 ft)**

Silence Duration

**9 minutes**



Wireless Interconnected Carbon Monoxide Alarm  
(Replaceable Battery / Sealed Battery)

**DHI-HY-GC20C-R8**

**DHI-HY-GC20D-R8**

Power Source  
**Replaceable 3V CR123A  
lithium battery**

Power Source  
**Sealed 3V CR123A  
lithium battery**

Battery Life  
**10 years**

Sensor Type  
**Electrochemical sensor**

Safety Standard  
**EN 50291-1:2018, EN 50291-2:2019**

Certification  
**TÜV, UKCA and CE listed**

Operating Frequency  
**868 MHz**

Maximum Number of Interconnection  
**24 pcs**

Alarm Sound Level  
**≥85 dB at 3 m (10 ft)**

Silence Duration  
**45 seconds**



Wireless Interconnected Carbon Monoxide Alarm  
with Temperature and Humidity Detection

**DHI-HY-GC30A-R8**

Power Source  
**Sealed 3V CR17450A lithium battery**

Battery Life  
**10 years**

Sensor Type  
**Electrochemical sensor**

Safety Standard  
**EN 50291-1:2018, EN 50291-2:2019**

Certification  
**TÜV, UKCA and CE listed**

Operating Frequency  
**868 MHz**

Maximum Number of Interconnection  
**24 pcs**

Alarm Sound Level  
**≥85 dB at 3 m (10 ft)**

Silence Duration  
**9 minutes**





Wireless Interconnected Heat Alarm

**DHI-HY-HT10A-R8**

Power Source  
**Sealed 3V CR123A lithium battery**

Battery Life  
**10 years**

Sensor Type  
**Thermistor**

Safety Standard  
**BS 5446-2:2003**

Certification  
**SGS and CE listed**

Operating Frequency  
**868 MHz**

Maximum Number of Interconnection  
**24 pcs**

Alarm Sound Level  
**≥85 dB at 3 m (10 ft)**

Detection Class  
**Class A1 fire detection (54°C - 65°C)**



Wireless Interconnected Environmental Sensor

**DHI-HY-ES10A-R8**

Power Source  
**Sealed 3V CR123A lithium battery**

Battery Life  
**10 years**

Temperature Accuracy  
**±0.1°C typical**

Humidity Accuracy  
**±1.5%RH typical**

Certification  
**UKCA and CE listed**

Operating Frequency  
**868 MHz**

Maximum Number of Interconnection  
**24 pcs**



Wireless Interconnected Alarm Control Unit

**DHI-HY-RC20A-R8**

Power Source  
**DC 3V Lithium Battery**

Battery Life  
**10 years**

Maximum Number of Interconnection  
**24 pcs**

LED Indicator  
**Fire alarm (red), CO alarm (red), fault (yellow)**

Certification  
**UKCA and CE listed**



Wireless Gateway

**DHI-HY-GW01A**

Power Source  
**DC 5V Type-C power**

Operating Frequency  
**868 MHz**

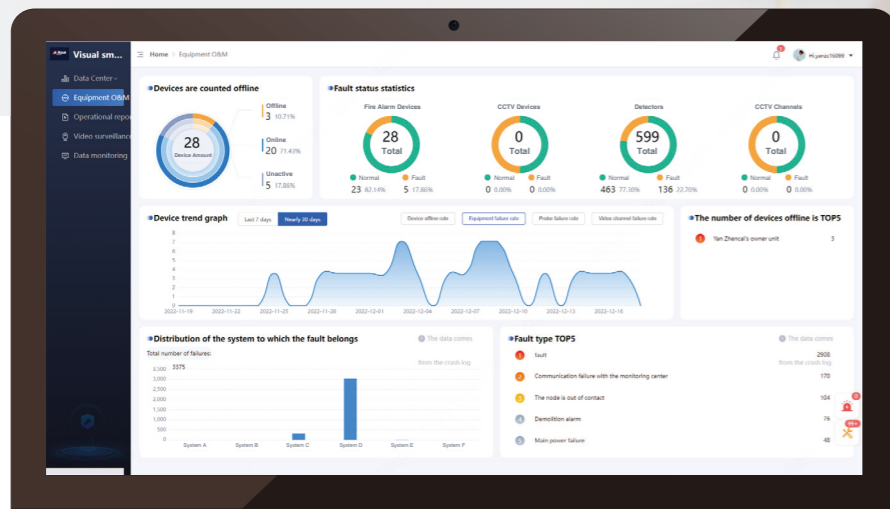
Communication  
**WiFi, TCP/IP(Ethernet)**

Installation Postions  
**Free-standing/ Wall mounting**

Certification  
**UKCA and CE listed**

# MAINS POWERED PRODUCTS SERIES

The Mains-powered Product Series in a house refers to an alarm system that is directly connected to the electrical mains supply of the building, providing smoke detection, heat detection and CO detection. Instead of relying solely on battery power, these alarms draw power from the electrical grid, ensuring a continuous and reliable power source.



Hardwired Interconnection to Build a Full-Range Home Fire Safety Protection



Support Hybrid Connection with the Optional Wireless Interconnected Module



Special Designed Detector Base for Easy Installation with Existed Screw Holes



Large Central Button for Regular Test and Unwanted Alarm Silence



Mains Smoke Alarm with 10-Year Rechargeable Lithium Battery Back-up

**DHI-HY-SA5MA**

Power Source

**AC 230V, 50Hz**

Battery Type

**Rechargeable lithium battery**

Sensor Type

**Split-spectrum photoelectric sensor**

Safety Standard

**EN 14604:2005+AC:2008, AS 3786:2014**

Certification

**BSI, UKCA and CE listed**

Alarm Sound Level

**≥ 85 dB at 3 m (10 ft)**

Silence Duration

**9 minutes**

Infrared Silence Function

**Support**



Mains Smoke Alarm with 9V Battery Back-up

**DHI-HY-SA5MB**

Power Source

**AC 230V, 50Hz**

Battery Type

**Replaceable 9V alkaline battery**

Sensor Type

**Split-spectrum photoelectric sensor**

Safety Standard

**EN 14604:2005+AC:2008, AS 3786:2014**

Certification

**BSI, UKCA and CE listed**

Alarm Sound Level

**≥ 85 dB at 3 m (10 ft)**

Silence Duration

**12 minutes**

Infrared Silence Function

**Support**



Mains Heat Alarm with 10-Year Rechargeable Lithium Battery Back-up

**DHI-HY-HT5MA**

Power Source

**AC 230V, 50Hz**

Battery Type

**Rechargeable lithium battery**

Sensor Type

**Thermistor**

Safety Standard

**BS 5446-2: 2003**

Certification

**BSI, UKCA and CE listed**

Alarm Sound Level

**≥ 85 dB at 3 m (10 ft)**

Silence Duration

**9 minutes**

Detection Class

**Class A1 re detection (54°C - 65°C)**



Mains Heat Alarm with 9V Battery Back-up

**DHI-HY-HT5MB**

Power Source

**AC 230V, 50Hz**

Battery Type

**Replaceable 9V alkaline battery**

Sensor Type

**Thermistor**

Safety Standard

**BS 5446-2: 2003**

Certification

**BSI, UKCA and CE listed**

Alarm Sound Level

**≥ 85 dB at 3 m (10 ft)**

Silence Duration

**9 minutes**

Detection Class

**Class A1 re detection (54°C - 65°C)**



Wireless Interconnected Module

**DHI-HY-MRF50-R8**

Compatibility  
**Wisualarm mains powered devices and WisuLink series**

Maximum Number of Interconnection  
**24 pcs**

Operating Frequency  
**868 MHz**

Safety Standard  
**EN 300200-2, EN 301489-1, EN 301489-3**

Certification  
**UKCA, CE listed**



Mains Powered Gateway

**DHI-HY-GW02A**

Communication  
**WiFi, Ethernet and 4G**

Maximum Number of Interconnection  
**24 pcs**

Operating Frequency  
**868 MHz**

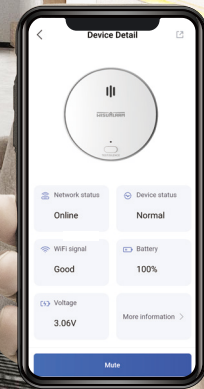
Back-up Battery  
**Rechargeable battery with 4750 mAh**

Certification  
**UKCA and CE listed**

Alarm Sound Level  
**≥70 dB at 1 m (3.3 ft)**

# WI-FI PRODUCT SERIES

Wi-Fi Product Series provides smart home IoT solution for smoke detection. Without any gateways, the alarms can be directly linked to your home Wi-Fi network and send real-time notifications via app in your cell phones.



Wi-Fi Smoke Alarm  
DHI-HY-SA2FA

Power Source

**Replaceable 3V CR123A lithium battery**

Battery Life

**2 years**

Sensor Type

**Split-spectrum photoelectric sensor**

Safety Standard

**EN 14604:2005+AC:2008, AS 3786:2014**

Compatible App

**Wisualarm**

Operating Frequency

**2.4 GHz**

Alarm Sound Level

**≥85 dB at 3 m (10 ft)**

Silence Duration

**12 minutes**

# AI-FIRE PRODUCT SERIES

AI-Fire product series offer the cost-effective solution of combination between fire alarm products and CCTV cameras for linking the video stream with fire alarm signals to help users become labor-saving for fire alarm inspection or offer a convenience for them to do analysis after fire.



Smoke Sensing Network Camera Plus  
HY-SAV849HA-ET

**Product Function**  
Temperature Detection + Humidity  
Detection + Smoke Sensing + Video Linkage

**Power Source**  
DC 12V / PoE and 3V CR123A lithium back-up battery

**Smoke Sensor Type**  
Split-spectrum photoelectric sensor

**Camera Field of View**  
Horizontal: 144°; Vertical: 92°; Diagonal: 179.6°

**Measurement Range and Accuracy**  
Temperature: -20°C~ 120°C, ±1°C  
Humidity: 5 %RH ~ 95 %RH, ±5 %RH

**Camera Image Sensor**  
1/2.7" CMOS, 2.0mm focal length, wide angle

**Safety Standard**  
EN 14604:2005+AC:2008, AS 3786:2014, CE, FCC

**Alarm Sound Level**  
≥85 dB at 3 m (10 ft)



Flame Detection Network Camera Pro  
HY-FT431LD

**Product Function**  
Flame and abnormal temperature detection  
based on thermal sensor

**Power Source**  
DC 12V / PoE

**Sensor Type**  
Visible sensor and thermal sensor

**Image**  
Visible and thermal image

**Maximum Resolution**  
4MP

**Detection Angle**  
Horizontal: 90°, Vertical: 67.5°

**Detection Range**  
Up to 10 meters

**Safety Standard**  
CE, FCC





**WISUALARM**

「Smarter and Safer Life Expert」

\*Design and specifications are subject to change without notice.

## WISUALARM TECHNOLOGY

Add: No.1399 Binxing Road, Binjiang District, Hangzhou, P.R.C  
Email: [partner@wisualarm.com](mailto:partner@wisualarm.com)  
Website: <https://www.wisualarm.com>



Wisualarm Website



Facebook



LinkedIn



Youtube