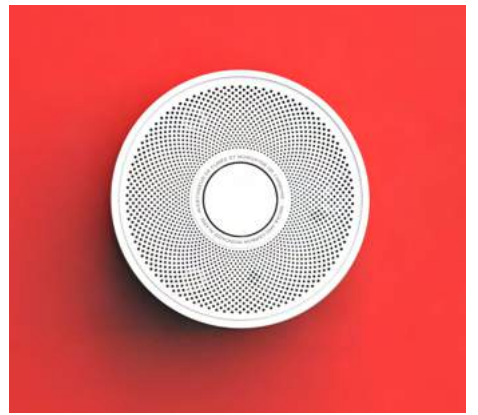


SHEPHERD ULTIMATE E2E SOLUTIONS

Smart Home Security



The Crow Group provides innovative and creative solutions for residential and commercial applications with an extensive range of smart panels and a broad portfolio of indoor and outdoor wired and wireless peripherals to create smart and secure homes.

Our products are available worldwide through a dynamic network of distributors and sales offices to professional installers as well as central and care monitoring stations.

Crow, a market leader in Security since 1977, is now adding deep expertise and development in artificial intelligence, video analytics and smart cloud providing solutions for Security, Monitoring and Telecare.



YOUR SECURE CHOICE SINCE 1977

Content

1 Shepherd Ultimate Security System

- 3 Communication
- 4 Smart Security Analytics
- 5 Ecosystem
- 6 Alarm Panel
- 7 Keypad & Remote Keyfobs
- 8 Repeater

9 Crow Apps and Web Pages

- 10 Personal Web Page
- 11 Web Installer Page

13 Video Verification

- 14 Indoor PIR & CAM Detector
- 15 Outdoor PIR & CAM Detector
- 16 Verification Camera

18 Audio Verification

19 Alarm Detection

- 20 Indoor PIR Motion Detectors
- 21 Outdoor PIR Motion Detector
- 22 Magnet & Shock Devices
- 23 Glass Break Detector

25 Signalling Devices

- 26 Indoor Sounder
- 27 Outdoor Sounder

29 Safety Devices

- 30 Smoke Detectors
- 31 Flood Detector
- 32 Air Quality Sensor
- 33 Temperature Sensor

34 IP Cameras & Doorbell

- 36 Outdoor IP Cameras
- 38 Doorbell & Chime Box
- 40 Indoor IP Camera
- 41 Solar Panel

SHEPHERD™ Security System

1.

Communication

Smart Security Analytics

Ecosystem

Alarm Panel

Keypad & Remote Keyfobs

Repeater



PIR Detector



PIRCAM Detector



PIR Curtain Detector



Alarm Panel



Magnet contact device



Outdoor PIR Camera



Audio Verification Module



Glass Break Detector



Smoke Detector



Flood Detector



Indoor Sounder

SHEPHERD Ultimate Communication

3.

Shepherd Ultimate is Crow's next generation of Security and Safety panels, offering the highest standards of reliability in data transmission via its multiple encrypted communication paths and advanced Cloud services suite.

- ✓ Smart and wide Portfolio for Security, Safety & Home Comfort devices.
- ✓ Ecosystem with Smart Connected Home Devices and Peripherals with extended life time.
- ✓ SOTA "Software Update Over-The-Air" for easy remote configuration, wireless equipment upgrade and testing.
- ✓ FOTA "Firmware Over-The-Air" for devices.
- ✓ Advanced diagnostic tools for optimal installation and configuration.
- ✓ Artificial Intelligence with detection and recognition.
- ✓ Outstanding Crow Cloud and Smart Shepherd™ Apps.
- ✓ CMS/ ARC Management Software Support.
- ✓ Big Data turned into Smart Data.
- ✓ Compatible with Amazon Alexa and Google Assistant for IoT Voice activation.



Big data is about both storage and analytics. It gives the ability to gather massive amounts of digital information to analyze, visualize and draw insights that enable prediction and prevention of potential threats.



Crow turns Big Data into Smart Data for the benefit of CMS, installers and users

Intelligent video motion detection

Artificial Intelligence with detection and recognition

Analysis and Storage for watchlisting and prevention

Individuals in the identification scene vs. real-time stored database

Crow has developed security and surveillance applications that perfectly fit either residential or commercial environments.

Crow's solutions in the Smart Security market take advantage of the full suite of Crow's analytics algorithms, software and Cloud running on co-located servers, or as a cloud based web service running on public or private cloud.

Crow's analytics make devices truly smart by analyzing content in real-time, extracting metadata, sending out alerts and providing intelligence to the whole security Ecosystem.

We are able to extract just the valid motion in a scene, filtering out noise such as lighting changes and animal motions, thereby reducing false alarms to virtually zero.

Key features include object classification (human/pet/vehicle), intrusion detection and line crossing, people/vehicle counting object left/removed and video summary.

Shepherd Ultimate



Alarm Detection



Video Verification



Audio Verification



User Interface



Signaling Devices



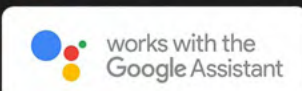
Safety Detectors



Elderly Care



Home Comfort & Control



SHEPHERD Ultimate

Alarm Panel

6.



Zones	Up to 128 Wireless Zones (ISM & DECT ULE)
Areas	Up to 4 Partitions (areas)
Users	Up to 64 users with codes and/or pendants
Arming Modes	Total, Stay, Latchkey, Duress, Bypass
Outputs	Up to 64 Wireless Outputs (ISM & DECT)
Visual Verification	Up to 16 indoor or outdoor PIRCAM detectors
Connectivity	4G/LTE, WI-FI, IP, FULL DUPLEX VOICE
RF Network Types	Two Way ISM bands 868 and 916 Mhz (5 Radio Frequency Agility) DECT Audio and DECT ULE
Immunity	RF : AES 128 NETWORK : TLS
Operating Range	500 meters open space
Report Channels	Up to 8 report channels: TCP/IP, Wi-Fi, GSM/GPRS, SMS
Protocols to CMS	Crow Proprietary Protocol, SIA DC09 –SIA DCS
Programming	Via Web browser interface
Log Events	More than 2000 events
Time Zones	Up to 32 Time Zones
Mounting	Wall mount with front & back tamper protection
Power Input	110V or 230V AC 50/60Hz
Power Supply Type	Internal AC/DC Adaptor 6V/2A
Backup Battery Type	Battery Pack 3.7V/2600mAh
Battery Autonomy	12 Hours / optional 24 hours
Battery Charge Max Current	Approx. 500mA
Dimensions & Weight (Inc. battery)	234 mm x 166 mm x 32 mm / 1.40Kg
Operating Temperature	-10° C to 55 °C
Compliance	EN50131 Security Grade 2 Class II

SH-KP-ADV & FW2-RMT

Wireless Keypad and Remote Keyfobs



SH-KP is the Shepherd™ panel's fully wireless icon keypad with RFID & internal sounder. FW2-RMT is a 4-button two-way wireless keyfob for arming and disarming the Shepherd™ panel with visual LED confirmation.

The FW2-RMT as well as the proximity tags can be attached to a keychain.

	SH-KP-ADV	FW2-RMT
Operation Method	Icon LED Keypad & RFID	4 independent and programmable buttons
Communication Protocol	Freewave2™ two-way ISM GFSK with 5 frequencies & LBT	Freewave2™ two-way Protocol GFSK with 5 frequencies & LBT
Frequency Band	868MHz or 916MHZ	868MHz or 916MHZ
Identification	Unique ID serial number – 24 bit	Unique ID serial number – 24 bit
Proximity Tag	RFID ISO 15693	N/A
Functions	Arm, Disarm, Zone Bypass, Panic Alarm, Chime Local Programming mode (users/tags)	Arm / Disarm Panic Alarm
Communication Range	500m open space	150m open space
Current Consumption	Average current: 80uA Max Current: 350mA at beeps	Standby: <1 µA Transmission: ~30 mA
Battery	2 x Lithium batteries 1.5V AA Energizer L91	Lithium 3V Size CR2032
Battery Life	Up to 3 years	Up to 5 years
Operating Temperature	-10°C to +55°C	-10°C to +55°C
Dimensions	152mm x 87mm x 28mm	87mm x 38mm x 12mm
Weight	200 gr	20 gr
Compliance	EN50131 Security Grade 2 Class II	EN50131 Security Grade 2 Class II

CB-RPT

Two Way Wireless Selective Repeater



The CB-RPT extends your RF ISM home alarm system data reception and the RSSI range of your connected devices. It receives alarm, status and control messages from the wireless devices and sends these messages to the control panel.

CB-RPT

Data Protocol	Freewave2™ Two Way ISM
Modulation Type	GFSK with 5 frequencies & LBT
Frequency band	868MHz / 916MHz
Identification	Unique ID serial number – 24 bit
Events Supported from connected devices	Alarm, Tamper, Supervision, Low Bat
Event Transmission	Low Bat , AC Fail, Supervision
Supervision Time	Every 1 min
Range (open space)	500m
Operation Voltage	5V DC
Battery Backup	3.7V/3Ah Li-Ion Rechargeable ~ 48 hours back up
Time to Charge	less than 24 hours
Low battery	3.7V
Cut off	3.3V
Current Consumption	Average <20 mA TX Power < 14 dBm
Operating temperature	-10°C to +55°C
Dimensions	130mm x 130mm x 20mm
Weight	200 gr
Compliance	CE

Crow Pro Apps

Smartphone Apps for IOS and Android Users

Whether at home, at work, on a business trip, or on vacation, the CrowPro Alarm™ smart apps provide the easiest way to monitor and control your Shepherd™ Panel.

Control panel status (Arm, Disarm...)

Check latest events

See and Operate on active Outputs (Activate/Deactivate)

See and Operate Zones (Activate/Deactivate Bypass)

Take picture from connected Pircam(s)

View stored pictures and Share them (via mail, message...)

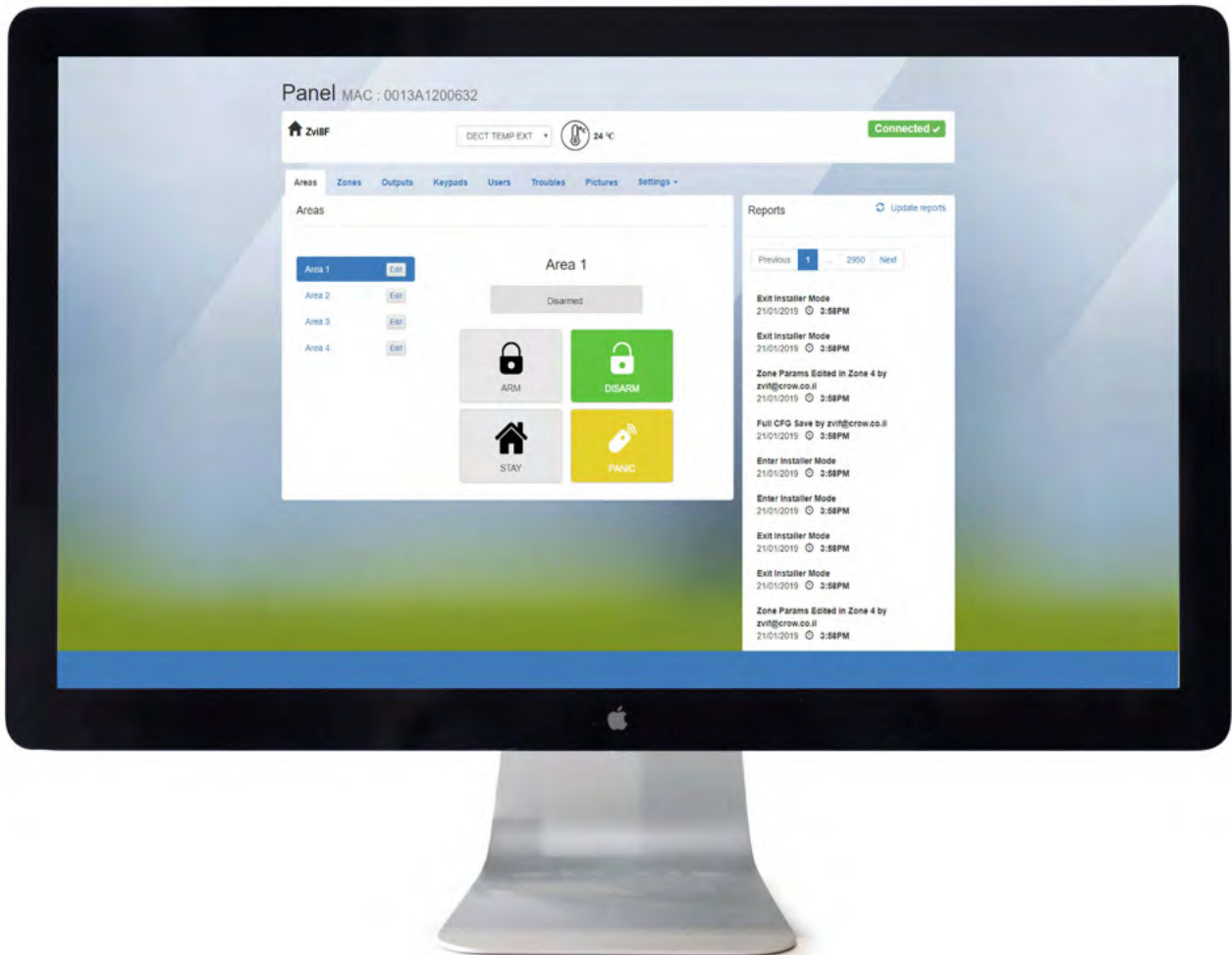
Access to Panel & Users Info

Switch between linked panels (home, office...)





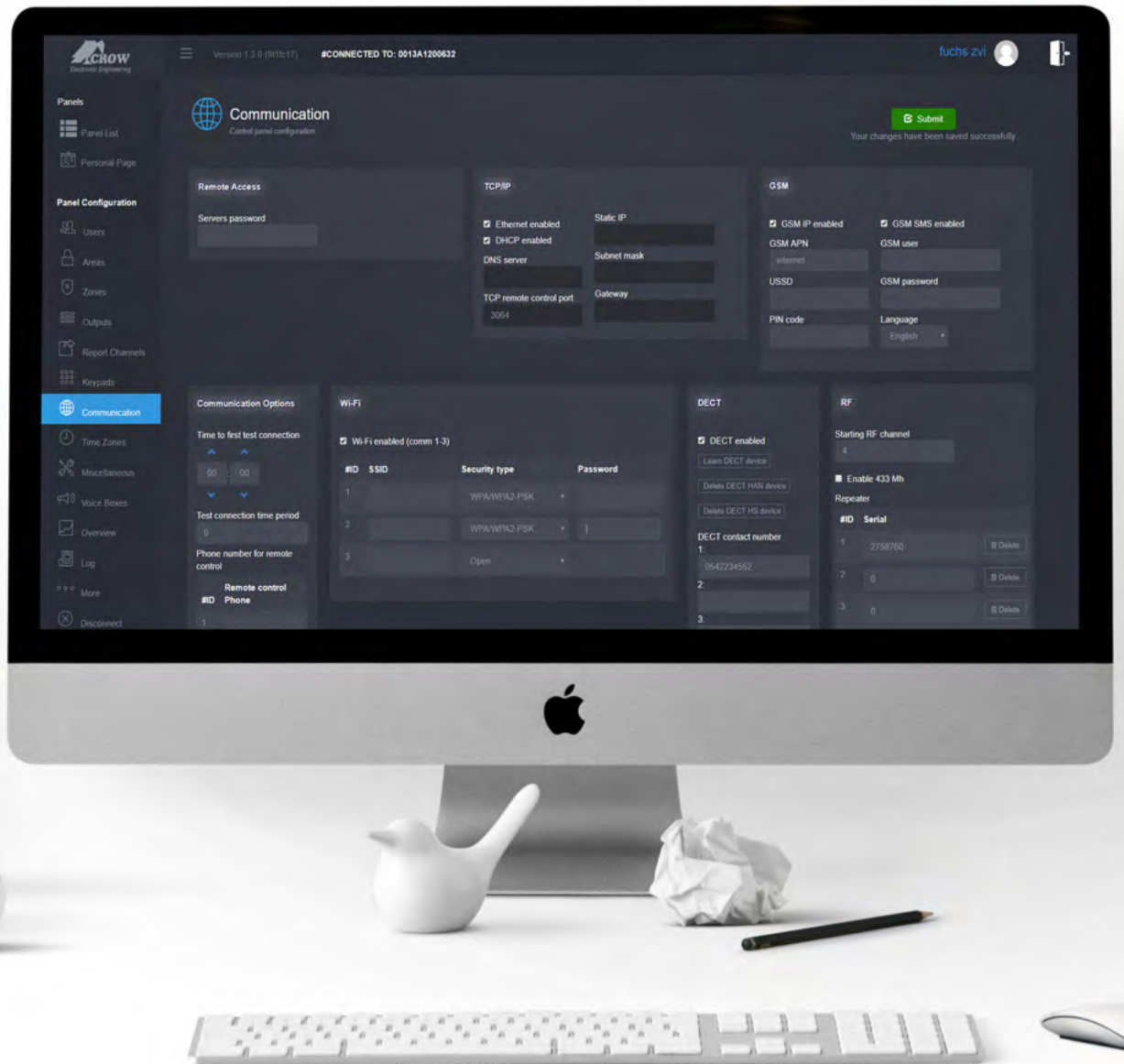
With Crow Personal Page™, you can also monitor and control the Shepherd™ panel through your PC via a web friendly personal web page.



Installer Web Page

Secure Web Access for Installers & Monitoring Centers

The Crowcloud™ Web Installer is a friendly interface which enables to configure, monitor, test and control Shepherd™ alarm panels, their communication and connected devices.





Video Verification

Indoor PIRCAM Detector

Outdoor PIRCAM Detector

SH-PIRCAM-IN

Wireless Indoor PIR & Camera Detectors

Crow's Indoor PIRCAMS are two-way wireless motion detectors with built-in CMOS high quality color cameras. They provide an ideal solution for video verification via pictures transmitted to a CMS or to your mobile phone via CrowPro Apps. Both users and CMS can verify alarms day and night by viewing real-time color images captured by Crow's PIRCAMS for fast and accurate response to real alarm events. They can be configured Over-The-Air.



SH-PIRCAM-IN

Detection Method	Quad Pyro Element Sensor & CMOS HDR Camera
Optics	Mirror Optics and Creep Zone
Communication Protocol	Freewave2™ two-way ISM GFSK with 5 freq. & LBT
Operating Frequencies	868MHz or 916MHz
Identification	Unique ID serial number – 24 bit
CAM Resolution	VGA or QVGA
CMOS Sensitivity	16VLux/sec
Picture Mode & Resolution	Configurable VGA / QVGA
Detection Range	12 m
Events Transmission	Alarm, Tamper, Supervision, Low Bat, Keep Alive
Supervision Time	7 min by default (configurable between 1 to 30 min)
Transmission Range	500m open space
Pet Immunity	Up to 25 kg
Battery	2 x Lithium batteries 1.5V AA Energizer L91
Battery Life	Up to 5 years
Current Consumption	Receive mode ~26 mA Transmit mode ~52 mA
Tamper Switch	Front Cover and Wall Removal
Operating Temperature	-10°C to +55°C
Dimensions/Weight	112mm x 58mm x 45mm / 120 gr.
Compliance	EN50131 Security Grade 2 Class II

SH-PIRCAM-OUT AM

Wireless Outdoor AM PIR & Camera Detector



SH-PIRCAM-OUT

Detection and Picture	PIR Motion Sensor with Anti-Mask & CMOS camera
Events	Alarm, Anti-Mask, Tamper, Battery Low, Supervision
Communication Protocol	Freewave2™ two-way ISM GFSK with 5 freq. & LBT
Operating frequencies	868MHz or 916MHz
Camera sensor	VGA/QVGA, 16V lux/sec, field of view 90°
Pet Immunity	Up to 35 kgs
Tamper Protection	Front cover opening and wall removal
LED Indication	Red LED indicator for Alarm and Trouble state
Battery	4 x Lithium batteries 1.5V AA
Battery Life	Up to 5 years
Current Consumption	Average 140 uA
Transmission Range	500m open space
Operating Temperature	-40°C to +55°C
IP Protection	IP 65
Accessories	Batteries and Wall bracket supplied
Dimensions	218mm x 75mm x 87mm
Weight	400 grs
Compliance	CE

SH-AVM

Audio Verification Module

SH-AVM is an indoor audio verification module. Upon transmission of an alarm signal, the SH-AVM provides remotely controlled and full duplex functionality between a central station operator and the occupants of the premises. Receiving audio verification simultaneously with the alarm signal allows the CMS to prioritize and verify alarms before acting, making the SH-AVM the ideal solution to false dispatching and unverified alarm problems.

Up to 4 modules can easily be installed in any convenient location in your home.



SH-AVM

Modulation Type	DECT ULE
Event Transmission	Emergency Voice Call, Low Bat, Keep Alive (every 7 minutes – configurable)
Activation Method	Push-Button for speed dial emergency call
Range	500m open space
Operating Voltage	5 Volts DC supplied from wall mount adaptor
Battery	Rechargeable Polymer 3.7V 1000mAh
Current Consumption	Talk Mode: 300mA Up to 3 hours talk time in battery mode Standby: 5mA Up to 1 week in battery mode
LED Indicators	Yellow: Hang Up Green: Pair Status OK Speed dial Red: Pairing/HW problem
Operating Temperature	0°C to +50°C
Dimensions	104mm x 104mm x 29mm
Weight	150gr
Compliance	CE, FCC Part 15, IC, ETL & ULE



Alarm Detection

Indoor PIR Motion Detectors

Outdoor PIR Motion Detector

Magnet & Shock Devices

Glass Break Detector



SH-PIR & SH-PIR-CRT

Mirror Optics Wireless PIR & Curtain PIR Detectors

SH-PIR is a fully supervised mirror optics two-way wireless detector featuring motion detection, tamper protection, low battery and supervision.

SH-CRT is a wireless detector featuring a solid curtain coverage of up to 8m length by 3m height. SH-CRT may be used for perimeter protection by setting up detection "curtains" walls or windows.

SH-PIR & SH-CRT can be configured Over-The-Air.



	SH-PIR	SH-PIR-CRT
Detection Method	Quad Pyro Element Sensor	Quad Pyro Element Sensor
Communication Protocol	Freewave2™ two-way ISM GFSK with 5 frequencies & LBT	Freewave2™ two-way ISM GFSK with 5 frequencies & LBT
Operating Frequencies	868MHz or 916MHz	868MHz or 916MHz
Identification	Unique ID serial number – 24 bit	Unique ID serial number – 24 bit
Events Transmission	Alarm, Tamper, Supervision, Low Bat, Keep Alive.	Alarm, Tamper, Supervision, Low Battery
Supervision Time	7 min by default (configurable between 1 to 30 min)	7 min by default (programmable between 1 to 30 min)
Communication Range	500m open space	500m open space
Battery	3V Lithium CR123A	3V Lithium CR123A
Battery life	Up to 5 Years	Up to 5 Years
Current Consumptions	Average Current : 15uA Transmit current: ~45mA	Average Current : 15uA Transmit current: ~45mA
Tamper Switch	Front Cover and Wall Removal	Front cover removal & Back tamper
Operating temperature	-10°C to +55°C	-10°C to +55°C
Dimensions/ Weight	112mm x 58mm x 45mm / 120 gr.	108mm x 58mm x 42.5mm / 120 gr.
Compliance	EN50131 Security Grade 2 Class II	EN50131 Security Grade 2 Class II

SH-PIR-OUTDOOR

Wireless Outdoor PIR Detector

The SH-PIR OUTDOOR is a unique two-way wireless outdoor double quad motion detector with active Anti-Mask feature.

The advanced Double PIR Elements provide two detection areas for superior stability.
The SH-PIR-OUTDOOR like all any other Shepherd™ peripherals can be configured Over-The-Air.



SH-PIR-OUTDOOR

Detection and Picture	Double PIR Elements with Antimasking feature
Events	Alarm, Anti-Mask, Tamper, Battery Low, Supervision
Communication Protocol	Freewave2™ two-way ISM GFSK with 5 freq. & LBT
Operating frequencies	868MHz or 916MHz
Pet Immunity	Up to 55 kgs
Tamper Protection	Front cover opening and wall removal
LED Indication	Red LED indicator for Alarm and Trouble state
Battery	4 x Lithium batteries 1.5V AA
Battery	4 x Lithium batteries 1.5V AA
Current Consumption	Average~60 µA
Transmission Range	500m open space
Operating Temperature	-25°C to +55°C
IP Protection	IP 65
Accessories	Batteries and Wall bracket supplied
Dimensions	218mm x 75mm x 87mm
Weight	400 grs
Compliance	CE / EN Grade 2

SH-MAG2 and SH-MAG & SHOCK

Wireless Door/Window Magnet Shock Contact Devices

These devices provide perimeter protection for premises with early warning upon attempted intrusion.

SH-MAG & SHOCK device analyzes shocks while ignoring background vibrations.

They can be configured Over-The-Air and feature a 5 year battery life.



	SH-MAG2	SH-MAG & SHOCK
Detection Method	Internal reed switch or External magnet device	Magnetic contact and Shock
Communication Protocol	Freewave2™ Two Way Protocol	Freewave2™ two-way ISM GFSK with 5 frequencies & LBT
Operating Frequencies	868-869MHz / 916-917MHz	868MHz or 916MHz
Identification	Unique ID serial number – 24 bit	Unique ID serial number – 24 bit
Events Transmission	Alarm, Tamper, Supervision, Low Battery	Alarm, Tamper, Supervision, Low Bat, Keep Alive.
Supervision Time	7 min by default (programmable between 1 to 30 min)	7 min by default (configurable between 1 to 30 min)
Transmission Current	~10dBm	55mA
Battery	2 Lithium batteries AAA 1.5V Type L92	1 Lithium batteries CR123
Battery Life	Up to 5 years	Up to 5 Years
Current Consumption	Standby: ~3µA, Receive: ~29mA, Transmit: ~38mA	Average: 9uA
Tamper Switches	Front cover removal & Back tamper	Front Cover and Wall
Operating Temperature	-10°C to +55°C	-10°C to +55°C
Dimensions / Weight	97 mm x 22 mm x 21 mm / 40 gr.	98mm x 21mm x 22mm / 50gr.
Compliance	EN50131 Security Grade 2 Class II	EN50131 Security Grade 2 Class II

SH-GBD

Wireless Glass Break Detector

SH-GBD is an Omni-directional Wireless Glass Break Detector providing a detection coverage of 180°.

It can be configured Over-The-Air.



SH-GBD

Detection Method	Omni-directional Shock & Glass Break
Communication Protocol	Freewave2™ two-way ISM GFSK with 5 frequencies & LBT
Frequency	868MHz or 916MHz
Identification	Unique ID serial number – 24 bit
Events Transmission	Alarm, Tamper, Supervision, Low Bat.
Supervision Time	7 min by default (configurable)
Range in Open Space	500m
Coverage Area	Up to 6m - 180° radius
Battery	2 x Lithium batteries 1.5V AA Energizer L91
Battery Life	Up to 10 years
Current Consumption	Average 12uA
Transmission Current	~55mA
Tamper Switch	Back Tamper (Removal)
Operating Temperature	-10°C to +55°C
Dimensions / Weight	63mm x 63mm x 19.60mm / 120 gr.
Compliance	EN50131 Security Grade 2 Class II



Signalling Devices

Indoor Sounder

Outdoor Sounder

SH-SIRINT

Wireless Indoor Sounder

SH-SIRINT is a fully supervised wireless siren. Its slim and compact design blends into the decor and provides an alert to a potential danger. It also indicates entry and exit delays, trouble beeps and door chimes.

SH-SIRINT can be configured Over-The-Air.



SH-SIRINT

Communication Protocol	Freewave2™ two-way ISM GFSK with 5 frequencies & LBT
Operating Frequencies	868MHz or 916MHz
Identification	Unique ID serial number – 24 bit
Events Transmission	Alarm, Tamper, Supervision, Low Bat.
Supervision Time	7 min by default
Transmission Range	500m open space
Alert Method	Internal Piezo and LED
Sound Level	85dB at 1 meter
Flash Light	White LED
Battery	2 x Lithium battery 1.5V AA Energizer L91
Battery Life	Up to 5 years
Current Consumption	Average Current : ~60uA Max Current: Alarm 750mA
Tamper Switch	Bracket Removal
Operating Temperature	-10°C to +55°C
Dimensions / Weight	93 mm x 93mm x 26mm / 80gr.
Compliance	EN50131 Security Grade 2 Class II

FW2-NEPTUNE

Wireless Outdoor Sounder

FW2-Neptune is a wireless two-way self-powered outdoor siren. It features fully supervised communication highly reliable operation and optimal wireless performance, including visual and audio notifications.

FW2-Neptune can be configured Over-The-Air.



FW2-NEPTUNE

Communication Protocol	Freewave2™ two-way ISM GFSK with 5 frequencies & LBT
Frequency Band	868MHz or 916MHZ
Identification	Unique ID serial number – 24 bit
Range	500m open space
Sound Pressure Level	105dB
Siren Tone	yelp
Frequency Range	2700 ± 500 Hz
Indications	Flash LED during transmission (Arm/Disarm) and Activation
Flash Light	Power LED (90 Lumens)
Current Consumption	Standby Average: 110uA, External power 9-12 VDC standby 3mA, Alarm 0.83A
Power Supply	9V-15V / 2A
Siren Alarm Period	2 min/15 min (programmable)
Arm/Disarm Indication	LED Flash : Arm-1 Disarm-3 LED Flash with Beeps : Arm-1 Disarm-3
Supervision	Sync signal every 1 min
Tamper Switch	Normally Closed
Battery	Battery pack Lithium 3.6V / 13Ah
Battery Life	Up to 5 years
Low Battery Level / Indication	3.1V / LED Flash @ Arm/Disarm
LED Indicator	LED is ON during ALARM and TROUBLE
Operation Temp	-40°C to +70°C
IP Rating	IP 55
Dimensions / Weight	310 mm x 205 mm x 75 mm / 1.2 Kg (Without Battery)
Compliance	EN50131 Grade 2 Class IV



Safety Devices

Smoke Detectors

Flood Detector

Air Quality Sensor

Temperature Sensor

FW2-SMK-H

Wireless Smoke and Heat Detector

The FW2-SMK-H is an advanced two-way wireless fully supervised low-current wireless smoke detector that includes a transceiver for reliable system operation.

FW2-SMK-H cutting edge in fire safety featuring an on-board piezzo, sending alerts to the CMS or your mobile device if an alarm occurs.

The FW2-SMK-H can be configured Over-The-Air.



FW2-SMK-H

Detection and Picture	Photoelectric Smoke Chamber
Events	Alarm Smoke, Alarm Temperature, Tamper, Battery Low, Supervision
Communication Protocol	Freewave2™ two-way ISM GFSK with 5 freq. & LBT
Operating frequencies	868MHz or 916MHz
Alarm Sound Level	≤ 85 db at 3 meters
Detection Sensitivity	0.18dB/m ± 10%
Tamper Protection	Front cover opening and wall removal
LED Indication	Red LED indicator for Alarm and Trouble state
LED Indication	Red LED indicator for Alarm and Trouble state
Battery Life	More than 10 years
Current Consumption	32µA (Keep Alive every 7min) / Alarm 70mA
Transmission Range	More than 500m open space
Tamper Protection	Bracket Removal
Operating Temperature	-10°C to +55°C
Dimensions	125mm x 40mm
Weight	235 grs
Compliance	EN 14604

Wireless Flood Detector with Rope

SH-FLOOD is a two-way wireless Flood Detector designed to detect water leaks in kitchens, bathrooms warehouses or yachts. Installation is easy and provides an early warning of developing leaks.

The whole area can be effectively monitored by placing the rope near or along the possible flood sources.



SH-FLOOD V2

Detection Method	External golden contacts pins on device or external rope up to 1.5 meter on bracket
Communication Protocol	Freewave2™ two-way ISM GFSK with 5 frequencies & LBT
Frequency Band	868MHz
Identification	Unique ID serial number – 24 bit
Event Transmission	Alarm, Tamper, Supervision, Low Batt Supervision
LED Indications	Red LED during alarm
Tamper Switch	Front Cover Removal
Supervision Time	7 min by default (programmable between 1 to 30 min)
Communication Range	500m open space
Current Consumption	Average: 7uA
Transmission Current	55mA
Battery	2x Lithium battery 1.5V AA Energizer L91
Battery Life	Up to 5 years
Operating Temperature	-10°C to +55°C
Dimensions / Weight	63mm x 23.3m x 63mm / 100 gr
Compliance	CE

SH-AQ

Air Quality Sensor

SH-AQ enables you to take control of home air quality.

Indoor air quality is affected by smoke and volatile organic chemicals (VOCs).

Home building materials and furniture may also release these VOCs.

In the process of trying to secure your home by locking doors and keeping the windows shut you may inadvertently seal in carbon dioxide. Furnaces and other wood-fueled heaters also produce carbon monoxide while high humidity contributes to poor air quality.



SH-AQ

Operation Method	Air Quality Sensor
Communication Protocol	Freewave2™ two-way ISM GFSK with 5 frequencies & LBT
Frequency Band	868MHz or 916MHz
Identification	Unique ID serial number – 24 bit
Events Transmission	Air Quality Alert, Tamper protection, Low Battery
Supervision Time	7 min by default (configurable)
Tamper Switch	Front cover removal & Back tamper
Range	500m open space
Battery	2x Lithium battery 1.5V AA Energizer L91
Battery Life	up to 3 Years
Current Consumption	Average 110uA
Transmission Current	~55mA
Operating Temperature	-10°C to +55°C – Accuracy ±1°C
Relative Humidity Range	0 to 100% - Accuracy ±9 % RH (±2 % Hysteresis)
Pressure Range	300 - 1100 hPa – Accuracy ±1.0 hPa
Dimensions / Weight	63 mm x 63 mm x 19.60 mm / 40 gr.
Compliance	CE

SH-TEMP-XT

ISM Temperature Sensor

The SH-TEMP-PRB-XT is an advanced temperature sensor with integrated RF transceiver designed to be a fully supervised low-current device.

The SH-TEMP-PRB-XT is a part of the FREEWAVE2 devices that uses an advanced 2way RF transceiver combined with an intelligent communication protocol. Temperature over the external sensor by using unique cord with NTC connected to the external input (e.g. measur freezer internal temperature). Temperature measurements are transmitted to the control panel.

Each SH-TEMP-PRB-XT has a unique factory set ID code (24bit) which by registration is set into memory of the paired FREEWAVE2 TRANSCEIVER, enabling more secured communication and devices be remotely controlled from a specific transceiver.



Temperature Sensor

Detection Method	ISM Radio	External Wired Probe Sensor
Operating Frequencies		868MHz or 916MHz
Identification		Unique ID serial number – 24 bit
Events Transmission		Alarm, Tamper, Supervision, Low Bat, Keep Alive.
Supervision Time		1 min preprogrammed (not configurable)
Transmission Range		500m in open space
Battery		3V Type CR123A Lithium
Battery life		Up to 5 years
Current Consumptions		Standby ~20 mA Receive mode ~55 mA Transmit mode ~16 mA Low Bat 2.5V Cut Off 2.2V
Tamper Switch		Front Cover and Wall Removal
Operating temperature		-10°C to +55°C
Probe Temperature Measurement		-40°C to +105°C
Dimensions		97mm x 22mm x 21mm
Weight (incl. battery)		100 gr.

IP Cameras & Doorbell

Outdoor IP Cameras

Indoor IP Camera

Doorbell

Solar



OUTDOOR-IP1

Outdoor CAM-PIR

The OUTDOOR-IP1 camera is a Smart wireless outdoor camera with 5MP high- definition resolution and two-way audio.



OUTDOOR-IP1

Image Sensor	1/2.7" 5Megapixel CMOS / Effective Pixels 2592(H) x 1944(V)
Min. Illumination	Color 0.1Lux@F2.0 / Black/White 0.01Lux@F2.0
IR Distance	Night visibility up to 10m
Day/Night	Auto(ICR)/Color/B&W
Lens & FOV	3.0mm@F2.0, 105°/75°/140°
Compression and Bit Rate	H.264 / 32Kbps~2Mbps
Frame Rate	1~25fps
Audio Input/Output	Built-in mic/speaker
Motion Detection	PIR detection up to 9m with angle 120°
Communication Protocol	HTTP integrated with CrowCloud™
Wireless and Security	2.4G WIFI (IEEE802.11b/g/n) AES128
Power Supply	DC 5V/1A / Consumption Max. 2W
Battery	5200mAh rechargeable Li batteries
Current	Standby 200~800µA (average) / Working 150~230mA (IR LED off)
Battery life	Standby: up to 6 months / Working: up to 1.5-2 months (depends on usage)
Operating Temperature	-20 °C to 50 °C
IP Rating	IP65
Dimensions	38 x 93 x 79mm
Net Weight	225g

OUTDOOR-IP3

Outdoor Floodlight CAM/PIR 2-Way audio

The OUTDOOR-IP3 camera is a Smart WiFi outdoor camera with 1080P high- definition resolution, Pan motion and two-way audio.

Never miss a moment, even in complete darkness, with powerful floodlight technology control.



OUTDOOR-IP1

Image Sensor	1/2.8" 3Megapixel CMOS / Effective Pxels 2304(H)*1296(V)
Min. Illumination	3.0mm@F2.0, 110°/59°/135°
IR Distance	Color 0.1Lux@F2.0 / Black/White 0.01Lux@F2.0
Day/Night	Night visibility up to 10m
Lens & FOV	Auto(ICR)/Color/B&W
Compression and Bit Rate	H.264 / 32Kbps~2Mbps / Frame Rate 1~25fps
Frame Rate	Built-in mic/speaker
Audio Input/Output	up to 10m and angle 120 with Built-in Siren 100dB
Motion Detection	HTTP integrated with CrowCloud™
Communication Protocol	2.4G WIFI(IEEE802.11b/g/n) / Security AES128
Wireless and Security	12W Max. 1000lm / Color Temperature 3200K
Power Supply	Manually/PIR detection/schedule
Battery	0°~120°
Current	-20 °C to 50 °C
Battery life	IP65
Operating Temperature	AC 100V~240V / Total Power Max. 20W
IP Rating	Wall mounting
Dimensions	74 x 131 x 260mm
Net Weight	800g

Outdoor WiFi Battery Doorbell

The DOORBELL-IP is an internet-connected device that lets visitors request access at a building's front door or gate.



DOORBELL

Image Sensor	1/2.7" 5Megapixel CMOS / Effective Pixels 2592(H)*1944(V)
Min. Illumination	Color 0.1Lux@F2.0 / Black/White 0.01Lux@F2.0
IR Distance	Night visibility up to 10m
Day/Night	Auto(ICR)/Color/ B/W
Compression and Bit Rate	H.264 / 32Kbps~2Mbps
Frame Rate	1~25fps
Audio Input/Output	Built-in mic/speaker
Communication Protocol	HTTP integrated with CrowCloud™
Wireless and Security	2.4G WIFI (IEEE802.11b/g/n) AES128
Battery	5200mAh rechargeable Li batteries
Current	Standby: 200-800 μA (average) / Working: 150-200 mA (IR off)
Battery life	Standby: up to 6 months / Working: up to 1.5-2 months (depends on usage)
PIR Detection Range	Range Max. 5m / Angle 100°
Operating Temperature	-20 °C to 50 °C
IP Rating	IP65
Power Supply	DC 5V/1A, AC 12V-24V
Storage	SD card(Max.128G), Cloud storage
Dimensions and Weight	57 x 41 x 145 mm / 200g

CHIME-IP

Wireless Chime box

The CHIME-IP is a cost-effective and additional solution connected to your DOORBELL-IP. The CHIME-IP can connect to maximum eight doorbells.



CHIME-IP

Ring volume	≥80dB
Connector	Micro USB
Power	DC5V±10%
Standby consumption	<10μW
Work consumption	<100mA
Range	80m
Light indication	Yes
Weight	200g

Camera Indoor Pan & Tilt 360

The INDOOR-IP camera is a Smart WiFi wireless Indoor Pan & Tilt camera with 1080P high-definition resolution, Pan & Tilt motion and support two-way audio. Never miss a moment, even in complete darkness, with powerful night-vision technology.



INDOOR-IP

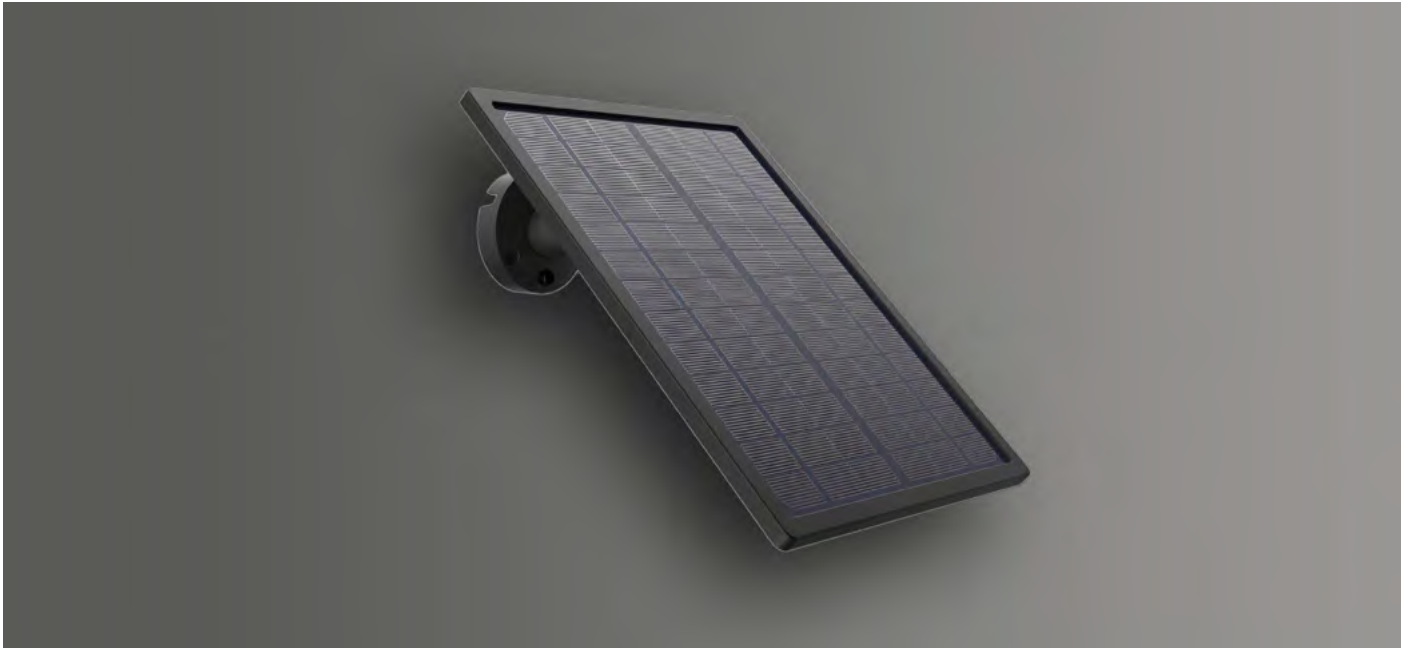
Image sensor	1/2.9" 2Megapixel CMOS
Effective pixels	1920(H)*1080(V)
Shutter	1/25~1/100,000s
Min illuminance	Color 0.01Lux@F1.2 Black/White 0.001Lux@F1.2
IR distance	Night visibility up to 10m
Day/Night	Auto(ICR)/Color/ B/W
Lens	3.6mm@F2.0, 105°
Compression	H.264
Bit rate	32Kbps~2Mbps
Audio input/output	Built-in mic&speaker
Alarm trigger	Intelligent motion detection
Communication Protocol	HTTP Integrated with Crow Cloud™
Wireless	2.4G WIFI(IEEE802.11b/g/n)
Operating temperature	-20 °C to 50 °C
Power supply	DC 5V/1A
Consumption	4.5W max
Dimensions	Φ81x119mm
Net weight	200 grs

SOLAR PANEL-IP

Solar Panel for IP Cameras

The SOLAR-IP is a cost-effective and sustainable solution for our wire-free IP cameras providing alternative energy source eliminating the need for a constant power source, such as electricity or batteries. This makes solar-powered IP cameras ideal for remote locations where traditional power sources may not be available.

The SOLAR IP can be installed on a pole or wall.



SOLAR-IP

Nominal power	3.3 W
Connector	Micro USB
Cable length	3 m
Bracket 360	included
Weatherproof	IP65
Dimensions	121 (W) x 174 (H) mm
Weight	100g



CROW ELECTRONIC ENGINEERING LTD.

12 Kineret Street

Airport City, 7010000 Israel

www.thecrowgroup.com

Catalogue Edition August 2024

specifications are subject to change without prior notice