

# **HAM-FL Series**

## **User's Manual**

**Please read the instructions carefully before using.**

## Safety Warnings

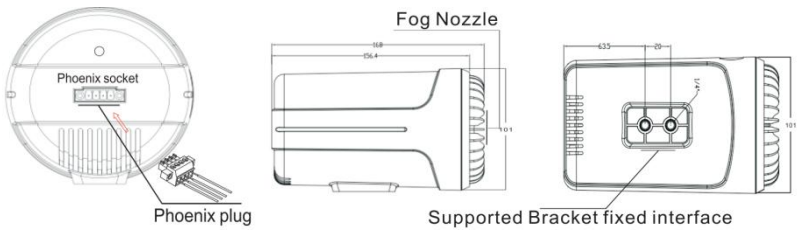
1. Please use the device cautiously if you have the asthma or any allergy of Lung and skin. Do not aim the device directly at people, aim the nozzle at the floor.
2. Keep the device away from children and pets to avoid accidental spraying. Please don't stay in the fog for a long time. It may make you uncomfortable if you inhale the fog. If your eyes or skin have any kind of irritation reactions, please clean with soap water or see a doctor immediately.
3. Before installing or replacing cartridges, please disconnect the power supply. Please keep the device away from flammable and explosive materials. If you have any doubts about the installation, please contact the qualified professionals.
4. Do not expose the device on high temperature. Keep the device dry and clean. The device is for indoor use, and it's not water-proof. If water or other liquids enter the device, please disconnect the power immediately and consult the after-sales service team.
5. After triggering, the nozzle will be extremely hot. Please do not touch the device immediately to avoid burns.
6. This device can not be used in car.
7. The manufacturer is not responsible for any damage caused by incorrect installation and operation.
8. The manufacturer is not responsible for any damage and accidents caused by not using the original replacement cartridges.

# Contents

<b>What's in box.....</b>	<b>1</b>
<b>Model Features &amp; Specifications.....</b>	<b>2</b>
<b>Installation &amp; Operations.....</b>	<b>3</b>
HAM-FL-Z.....	4
HAM-FL-R.....	4
HAM-FL-RPT.....	5
<b>Test Before Replace the Fog Cartridge.....</b>	<b>9</b>

## What's in box

1. Security Fog Generator\*1
2. Power Adapter\*1
3. Remote Control\*1 (only for HAM-FL-R/RPT)
4. Supported Bracket\*1 and tool & screws\*1set
5. Phoenix Plug\*1
6. User Manual\*1



## Model Features & Specifications

Model No.	Features	Remark
HAM-FL-Z	Trigger the fog by Panic Button & On-off Switch.	One time fog
HAM-FL-R	Trigger the fog by Panic Button & On-off Switch, RF remote control.	ejection, then need to refill

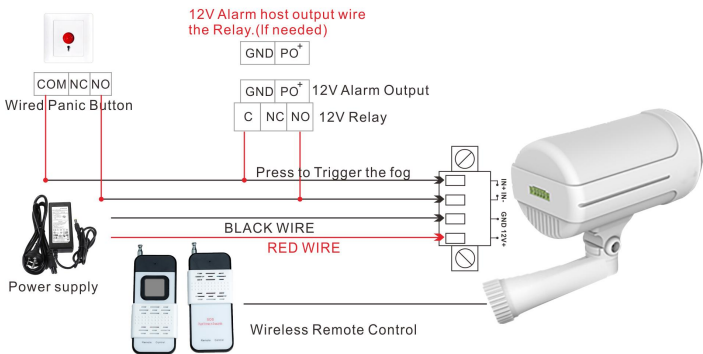
HAM-FL-RPT	Trigger the fog by Panic Button & On-off Switch, RF remote control, and Tuya SMART LIFE mobile App.	with new fog cartridge
Fog type	Solid, Non-toxic smoke.	
Fog coverage	100-150m <sup>3</sup> (installation height 2.5-3 meters) enclosed or semi-enclosed area).	
Fog features	Cold smoke, fog ejection in 1 second, protect critical areas in 3 seconds, cover the protected area in 8 seconds.	
Power supply	DC 12V/3A	
Power Consumption	0 ~ 24W	
Working Temperature	-10°C ~ 50°C	
Working Humidity	0 ~ 60%	
Installation Method	Wall/Ceiling mount	
Fog Duration	30~45minutes	
Certifications	CE, ISO9001	

# Installation & Operations

## Precautions:

1. The recommended installation height is 2.5-3m for best fog performance.
2. Make sure the product is tightly fixed on the supported bracket before connecting to the control switch.
3. Do not power on the device and make sure that the control switch is in the off-state until the installation and debug is completed.
4. Do not touch the physical casing or nozzle immediately after the smoke triggered in case of severe burns.
5. Before replacing the smoke cartridge, you must first check whether the equipment is normal, then replace it to avoid false triggering.

## WIRING DIAGRAM



### **Model No: HAM-FL-Z**

1. Wire connecting the Power adapter & Panic button/on off switch (if needed) as per above **wiring diagram**.
2. When the device is power on, fog can be triggered after 5 seconds(we set a 5 seconds waiting time to reduce the risk of false trigger, during which the red light is on and the blue light is flashing.)
3. After 5 seconds of power on, the blue light is off and the red light is still on, indicating that the device is running normally and can spray fog.
4. If being connected to a third-party security alarm system, when the switch signal is closed for less than 2 seconds, the fog generator will not be triggered to avoid false triggering due to the self-check of the security alarm host system(namely 2 seconds delay trigger for the fog device).

### **Model No: HAM-FL-R**

1. Wire connecting process is same as HAM-FL-Z.
2. After power on for 5 seconds, when the device is in normal status:  
Press the panic button or the RF remote control for more than 2 seconds, fog will eject immediately.

## Model No: HAM-FL-RPT

### HOW TO INSTALL

1. Wire connecting process is same as HAM-FL-Z.
2. The device has a pairing time of 60 seconds after each power on. During this period, fog cannot be triggered.
3. After 60 seconds of power on, close the switch signal or press the Remote control for more than 2 seconds to trigger the smoke. Or if you have paired the device with TUYA app, you can use the TUYA app to trigger the smoke.

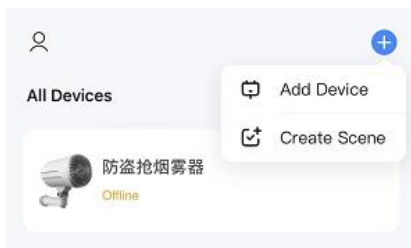
### HOW TO PAIR THE DEVICE ON MOBILE APP

1. After power on(within 60 seconds pairing time period), press the RF remote control for 3 times(1s interval), then (on the control board) green light is flashing, the Tuya module pairing state is activated.
2. Scan the below QR code or search in the App store to download the SAMRT LIFE APP. Follow the app instructions to register an account and log in, and allow the APP permissions for BLUETOOTH, LOCATIONS, NOTIFICATIONS, WLAN & CELLULAR DATA.

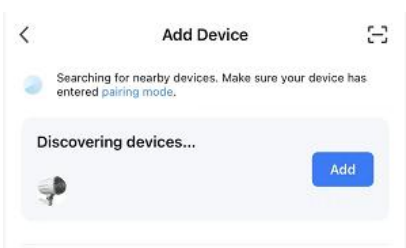




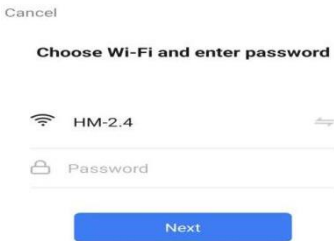
3. In the upper right of the App Home page, select ADD DEVICE (PIC 1), the system will auto discover the devices(PIC 2), tap to add the device. Then WIFI and enter password is required(PIC 3), please choose the 2.4g wifi for your Phone, and enter the wifi password, click NEXT(this step requires your permissions of BLUETOOTH & LOCATIONS). Then green light of the device control board changes from flashing to steady on, indicating successful pairing.



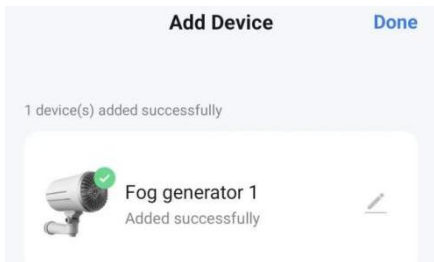
PIC 1



PIC 2



PIC 3

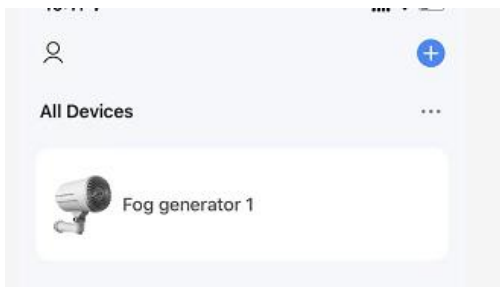


PIC4

3. When re-pairing the device needed: Power off and restart the device, within the 60s of pairing time, press the remote control 3 times continuously (every interval is 1s ), after the green light flashes, the device can be re-paired again. Please DON'T re-pair the device after 60s of device restart to avoid false fog triggering.

## HOW TO ACTIVATE THE FOG ON TUYA APP

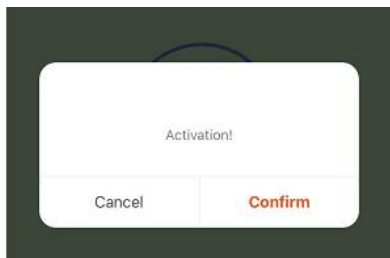
1. On the Home page of the App, select the paired device(PIC 5), (the device can be renamed), tap the ACTIVATE(PIC 6), and confirm again (PIC 7), the fog will spray immediately(PIC8).



PIC 5



PIC 6



PIC 7



PIC 8

2. You can also create the smart SCENE with all the TUYA supported sensors, alarms, motion detectors, siren, contact sensors, or smart cameras.

**AFTER THE GENERATOR BE TRIGGERED, THE FOG CONTAINER CAN BE VERY HOT, PLEASE REPLACE IT WHEN IT COOLS DOWN**

3. After triggering, the fog container need to be replaced for next time use (Make sure the physical case is fully cool down-normally 2hours needed). Please check the ORANGE indicator light status on control board before replacement:

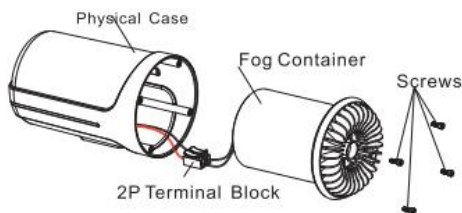
- 1) Normal state: the orange light is off.
- 2) Trigger state: if the orange light is on, it indicates that fog will spray immediately with fog module cartridge when power on.

When the orange light is off, user can make the related test as per following instructions.

## Test Before Replace the smoke Cartridge

Test tools: Multimeter

1. Unplug the power adapter, take out the smoke container, and pull out the wires from the 2P terminal block, then connect the Multimeter to the terminal.



2. Set the Multimeter on DC 12V, plug the power adapter, the Multimeter data shall remain 0.(If it displays as 0-12V, please check whether the switch or control board is damaged or not.)

3. Trigger the smoke by Panic button/switch/Remote control/App, the Multimeter displays 12V. Then test finished.