

HAM-FL-B Series

User's Manual

Please read the instructions carefully before using.

Safety Warnings

1. Please use the device cautiously if you have the asthma or any allergy of Lung and skin. Do not aim the device directly at people, instead aim the nozzle at the floor.
2. Keep the device away from children and pets to avoid accidental spraying. Please don't stay in the smoke for a long time. It may make you uncomfortable if you inhale the smoke. If your eyes or skin have any kind of irritation reactions, please clean with soap water or see a doctor immediately.
3. Before installing or replacing cartridges, please disconnect the power supply. Please keep the device away from flammable and explosive materials. If you have any doubts about the installation, please contact the qualified professionals.
4. Do not expose the device on high temperature. Keep the device dry and clean. The device is for indoor use, and it's not water-proof. If water or other liquids enter the device, please disconnect the power immediately and consult the after-sales service team.
5. After triggering, the nozzle will be extremely hot. Please do not touch the device until it is completely cooling down to avoid burns.
6. This device can not be used in car.
7. The manufacturer is not responsible for any damage caused by incorrect installation and operation, and also not using the original replacement cartridges.

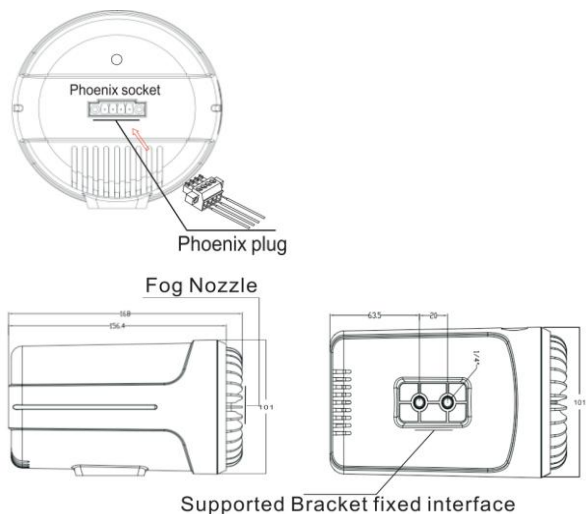
Contents

What's in box.....	1
Model Features & Specifications.....	2
Installation & Operations.....	3
HAM-FL-B.....	4
Test Before Replace the Fog Cartridge...	7

What's in box

1. Security Fog Generator*1
2. Power Adapter*1
3. Remote Control*1(only for HAM-FL-R/RPT)
4. Supported Bracket*1 and tool & screws*1set
5. Phoenix Plug*1
6. User Manual*1

Physical Casing



Model Features & Specifications

Model No.	Trigger Methods	Remark
HAM-FL-B	Panic Button & on-off Switch(batteries electricity can last for 2years), or RF remote control(its batteries electricity can last for 1year)	One time ejection, then need to refill with new smoke container.
Fog type	Solid, Non-toxic smoke.	
Fog coverage	100-150m ³ (installation height 2.5-3 meters) enclosed or semi-enclosed area).	
Fog features	Cold smoke ejection in 1 second, protect critical areas in 3 seconds, cover the protected area in 8 seconds.	
Power supply	DC 12V/3A	
Power Consumption	0 ~ 24W	

Working Temperature	-10°C ~ 50°C
Working Humidity	0 ~ 60%
Installation Method	Wall/Ceiling mount
Smoke Duration	30~45minutes
Certification	CE, ISO9001

Installation & Operations

Precautions:

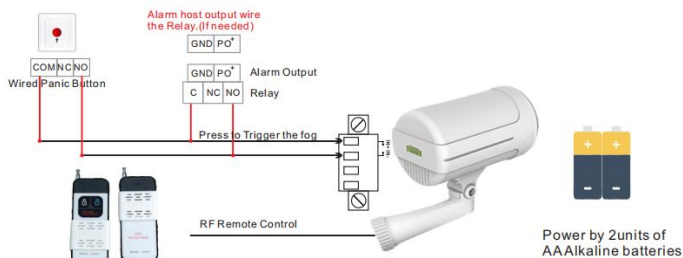
1. The recommended installation height for optimal smoke performance is 2.5-3m.
2. Make sure the product is securely fixed on the supported bracket before connecting it to the control switch.
3. Please do not power on the device and ensure that the control switch is in the off-state until the installation and debugging process is completed.
4. Please do not touch the physical casing or nozzle immediately after the smoke triggered prevent severe burns.
5. Before replacing the smoke cartridge, you must first

check whether the equipment is functional, then replace it to avoid false triggering.

Model No: HAM-FL-B(Panic button supported)

1. Connect the power adapter and panic button/on-off switch (if needed) using the wiring diagram provided below.

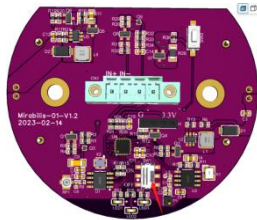
RF Remote Control & Panic Button Control



1. Please use 2 units of AA Alkaline batteries with good quality.



Then turn on the **power switch** on the board before use.



1. When the device is powered on (with well installed batteries inside), the red, yellow and blue lights flash alternately 5 times. The smoke cannot be triggered during this period (we set a 5 seconds waiting time to reduce the risk of false trigger.).
2. When the green light flashes once every 6 seconds, means the battery has sufficient power. The yellow light flashes once every 6 seconds, indicating that the power has been consumed and less than 50%. The blue and yellow flashes alternately indicate that the device is power low and might not be able to trigger the smoke. Users need to replace new batteries timely.
3. When the switch signal is activated, it should remain closed for more than 2 seconds (implementing a 2-second delay trigger for the fog device) to avoid

false trigger.

Model No: HAM-FL-B(RF remote control supported)

1. All installation process and IN+&IN-/switch signal control are same as HAM-FL-B(Panic button supported).
2. After power on for 6 seconds, when the device is in functional status: Press the RF remote control for more than 6 seconds, smoke will eject immediately.

AFTER THE GENERATOR BE TRIGGERED, THE SMOKE CONTAINER CAN BE VERY HOT, PLEASE REPLACE IT WHEN IT COOLS DOWN!

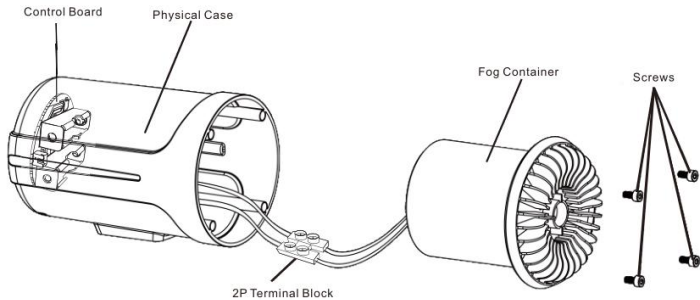
After triggering, the smoke container need to be replaced for future use (Make sure the physical case is fully cool down-normally 2 hours needed). Please check the ORANGE indicator light status on control board before replacement:

- 1) Functional state: the orange light is off.
- 2) Trigger state: if the orange light is on, it indicates

that smoke will spray immediately with smoke module cartridge when power on.

When the orange light is off, users can proceed with the related test following the instructions.

Test Before Replace the smoke Cartridge



Test tools: Multi-meter

1. Unplug the power adapter, take out the smoke container, and disconnect the wires from the 2P terminal block, then connect the Multi-meter to the terminal.
2. Set the Multi-meter on DC 12V, plug in the power

adapter, Multi-meter reading should remain at 0 volts.(If it displays as 0-12V, please check whether the switch or control board is damaged or not.)

3. Trigger the smoke by Panic button/switch/Remote control/App, the Multi-meter displays 12V. Then test finished.